

- 1
- 2
- 3
- 4
- 5
- 6
- 7
- 8
- 9
- 10
- 11
- 12
- 13
- 14
- 15
- 16
- 17
- 18

MATERIAL

Aluminium, matte finish.
AISI 304 stainless steel screws and nuts.

STANDARD EXECUTIONS

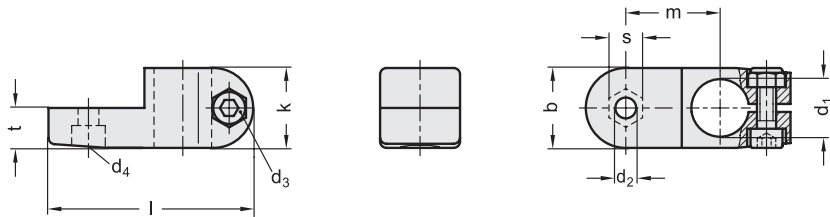
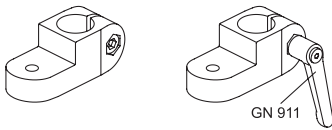
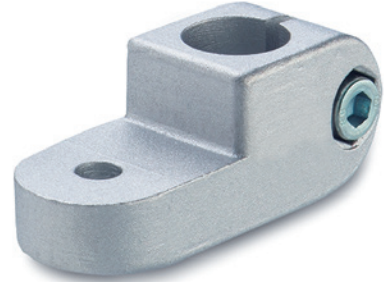
Surface finish index:
- **BL**: natural colour.
- **SW**: epoxy resin coating resistant to UV rays, RAL 9005 black colour.

FEATURES AND APPLICATIONS

The assembly hole of GN 273 connecting clamps allows an excellent match with tubes GN 990 (see page 1368).

GN 273 bases can be assembled with pivoting connecting clamps GN 271 (see page 1341), GN 275 (see page 1346) or GN 277 (see page 1347).

The clamping screw d_3 may be replaced by clamping kit GN 911 (see page 1372).



Conversion Table	
1 mm = 0.039 inch	
b	
mm	inch
25	0.98

METRIC

Code BL	Code SW	Description	b	d1	d2	d3	d4	k	l	m	t	s	d3 Clamping kit	△
GN.57411	GN.57416	GN 273-B12-2-*	25	12	6.5	M6	M6	25	64	29.5	12.5	10	GN 911-M6-22	65
GN.57431	GN.57436	GN 273-B14-2-*	25	14	6.5	M6	M6	25	64	29.5	12.5	10	GN 911-M6-22	62
GN.57451	GN.57456	GN 273-B16-2-*	25	16	6.5	M6	M6	25	64	29.5	12.5	10	GN 911-M6-22	60
GN.57471	GN.57476	GN 273-B18-2-*	25	18	6.5	M6	M6	25	64	29.5	12.5	10	GN 911-M6-22	55

Connecting clamps

* Complete the description of the standard item needed by adding the finish of the connector clamps: BL (blank) or SW (black).